

Maintenance Kit Type 4510 REPLACEMENT GUIDE < G790-8610 >

The maintenance kit contains the parts required to maintain the printer. When "Change Maint.Kit" appears on the panel display, replace the parts included in the maintenance kit. Read this guide carefully before you use the maintenance kit. For safety purposes, carefully follow the instructions in this guide.

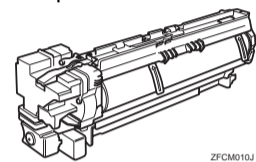
2

CHECKING THE CONTENTS OF THE BOX

The maintenance kit is composed of 2 types of boxes, Type 4510A and Type 4510B. Each box contains the following parts. Confirm that the contents of the boxes match the following lists.

Type 4510A

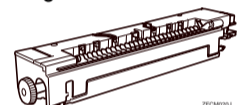
- Replacement Guide (this sheet)
- Removing the Development Unit from the Box
- Development Unit



- Disposal Bag
- For packing the used Development Unit

Type 4510B

- Fusing Unit



- Transfer Unit



- Gloves



- Disposal Bag
- For packing the used Transfer Unit

- Brief reference sheet

If one or more of the items are missing, please contact your sales or service representative.

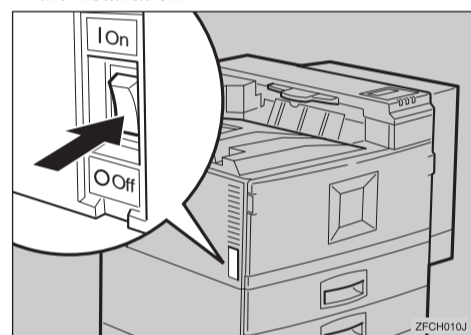
1

TURNING OFF THE PRINTER

Turn the printer's power switch off.

Important

- The inside of the machine becomes very hot. Be sure to turn off the printer before attempting to replace any of the parts. When replacing the old fusing unit with a new one, turn off the printer and wait for about 30 minutes before beginning the installation.



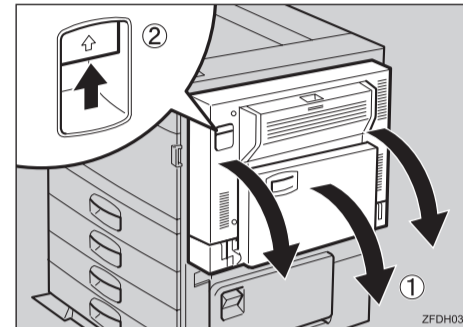
3

REPLACING THE TRANSFER UNIT

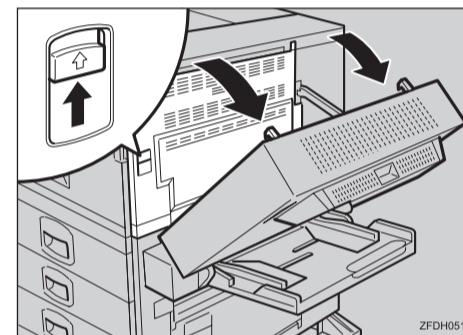
WARNING

- Do not incinerate the used transfer unit. Toner dust might ignite when exposed to an open flame.
- Disposal should take place at an authorized dealer or appropriate collection site.
- If you dispose of the used parts yourself, dispose of them according to local regulations.

- 1 Open the bypass tray (1), and then open the duplex unit by pushing the catch upwards (2).

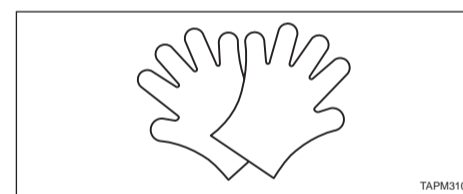


- 2 Open the right cover by pushing the catch upwards.

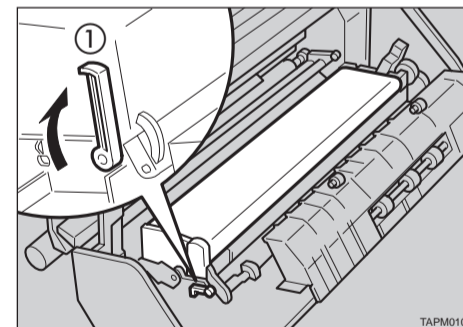


- 3 Put on the gloves included in the Type 4500B box.

Be sure to wear the gloves to avoid getting your hands dirty or damaging the belt surface of the new transfer unit.



- 4 Raise the green lever (1) inside the right cover to release the transfer unit.



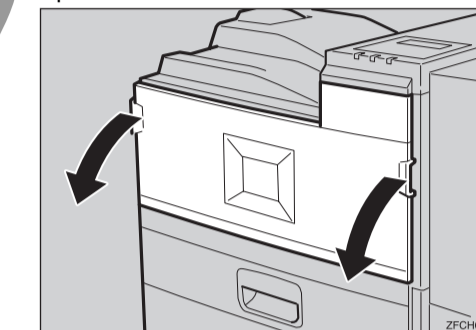
4

REPLACING THE DEVELOPMENT UNIT

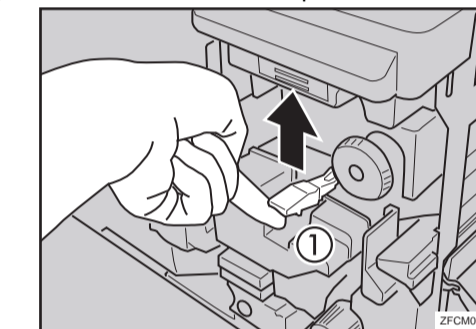
WARNING

- Do not incinerate the used development unit. Toner dust might ignite when exposed to an open flame.
- Disposal should take place at an authorized dealer or appropriate collection site.
- If you dispose of the used parts yourself, dispose of them according to local regulations.

- 1 Open the front cover.



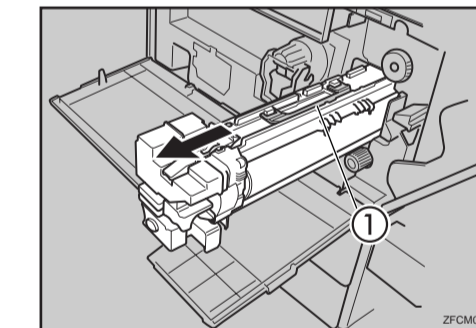
- 2 While raising the green lever inside the front cover (1), and then slide the development unit out about 10cm (4').



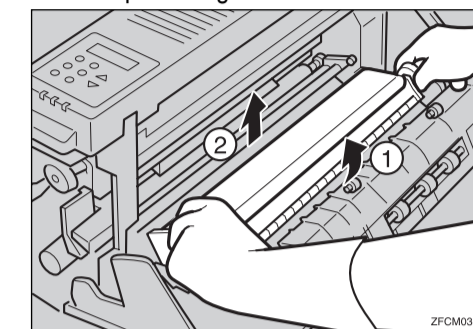
- 3 Slide the development unit out far enough so that you can hold it by the handle (1).

Important

- Slide the unit out to the position shown in the following illustration. If you slide it out too far, it may fall and damage the front cover.



- 5 Hold both sides of the unit. Lift the side of the unit closest to you slightly (1), and remove the unit from the printer (2) as shown in the illustration. Put the used transfer unit in the disposal bag.



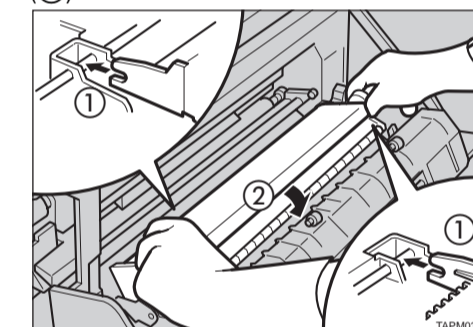
Important

- After removing the transfer unit, put the unit in the disposal bag. Be careful not to tilt or shake the unit. Otherwise, toner might scatter.

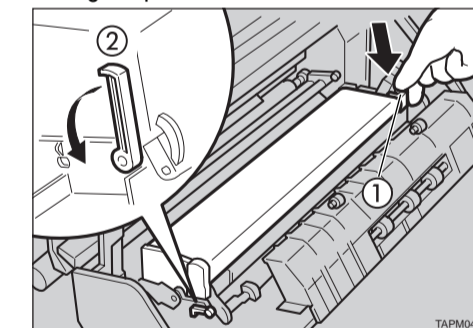
- 6 Take the new transfer unit out of the Type 4500B box, and remove the plastic bag.

- 7 Take the desiccant out.

- 8 There is an arrow sticker in the bottom right side of the cover, which is pointing to the shaft. Align the new transfer unit with the shaft (1), and then slide the unit in place (2).



- 9 While pressing down on the corner of the transfer unit indicated by the arrow (1), return the green lever (2) to its original position to lock the transfer unit in place.



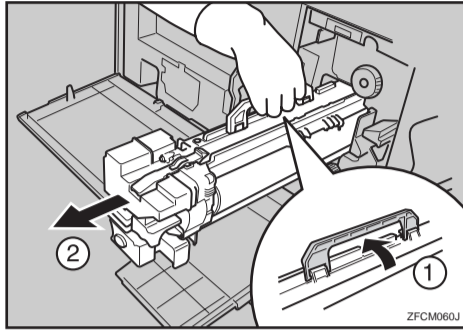
Note

- If you cannot return the green lever to its original position, raise the green lever and remove the transfer unit. After that, try to install the transfer unit again.

Leave the right cover open, and go to "4 REPLACING THE DEVELOPMENT UNIT".



- 4** Hold the green handle (①), and slide out the development unit (②). Put the used development unit in the disposal bag.



Important

- After removing the development unit, put the unit in the disposal bag. Be careful not to tilt or shake the unit, otherwise, toner might scatter.

- 5** Take the new development unit from the Type 4510A box. Before taking the development unit from the box, be sure to read the "Removing the Development Unit from the Box" sheet in the Type 4510A box and follow the instructions.

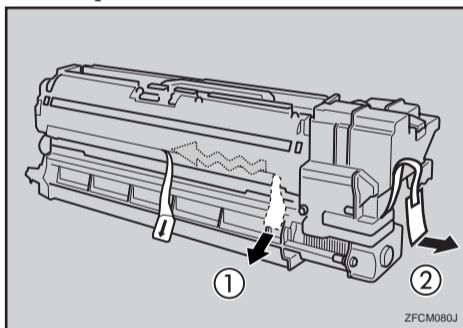
Important

- After taking the new development unit from the box, be careful not to shake or jar the unit.

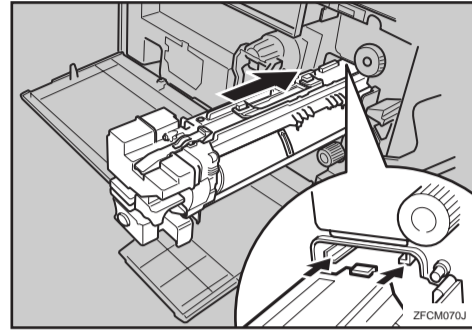
- 6** Remove the tape with the red tag (①) and the transparent tape (②).

Important

- While pulling out the tape, keep the development unit horizontal, as shown in the illustration. Tilting or shaking the unit might cause the toner to scatter.
- Do not remove the black sheet until you finish installing the unit. The black sheet is used to protect the green part of the development unit.



- 7** Align the new development unit with the rail in the printer. Slide the development unit into the printer until it makes a click as it locks into place.



- 8** At the right side of the printer, remove the tape on the left and right sides of the black sheet, and then pull out the sheet using both hands.



Leave the right cover open, and go to "5 REPLACING THE FUSING UNIT".

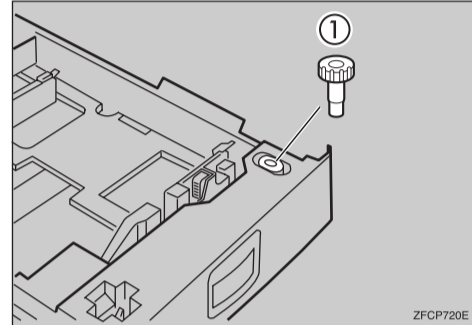
5 REPLACING THE FUSING UNIT

CAUTION

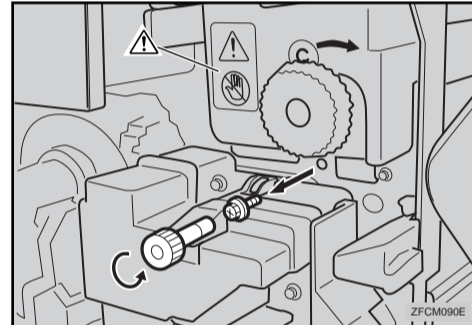
- The fusing unit becomes very hot. When installing the new fusing unit, turn off the printer and wait for about 30 minutes. After waiting, install the new fusing unit. Not waiting for the unit to cool down can result in a burn injury.

- 1** Be sure to wait 30 minutes after turning off the printer, and confirm that it is cool before continuing.

- 2** Pull out the standard paper tray (Tray 1), and take the screwdriver (①) from the tray.

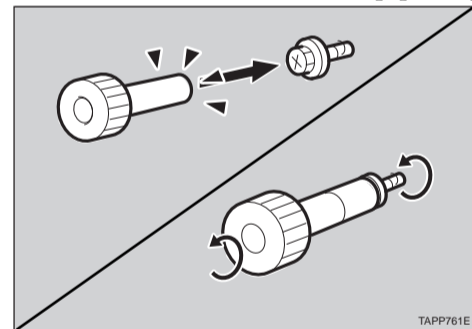


- 3** Remove the screw inside the front cover (①) by turning it counterclockwise to release the fusing unit.



Important

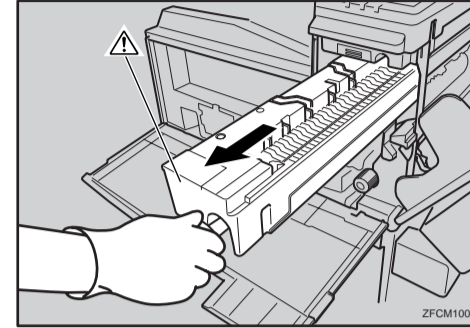
- When removing the screw, press the screwdriver onto the screw until it makes an audible click as it pops into place.



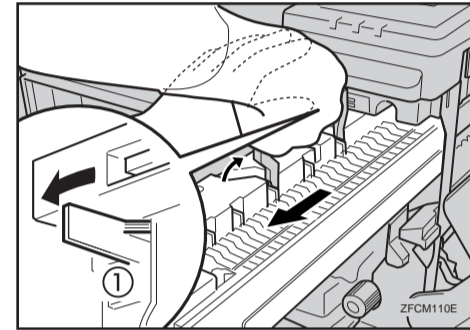
Note

- You need the screw to lock the new fusing unit afterwards.

- 4** Hold the blue knob, and slowly pull the fusing unit out until the whole of the green handle is visible.

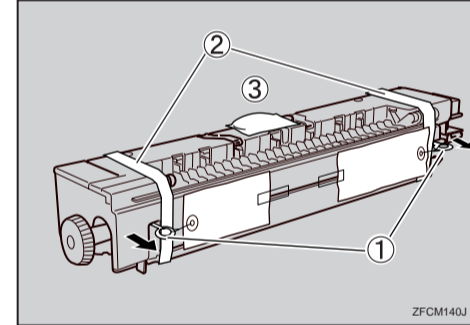


- 5** There is the green lever (①) on the left side of the fusing unit. While pressing the green lever to the left, slide the fusing unit out slowly with raising the green handle and holding it.



- 6** Take the new fusing unit from the Type 4510B box and remove the plastic bag.

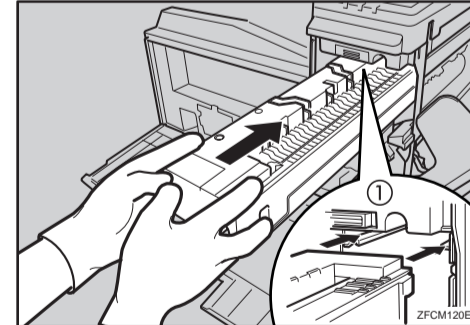
- 7** Remove the two pins with red tag (①), the three transparent tapes (②) and the desiccant (③).



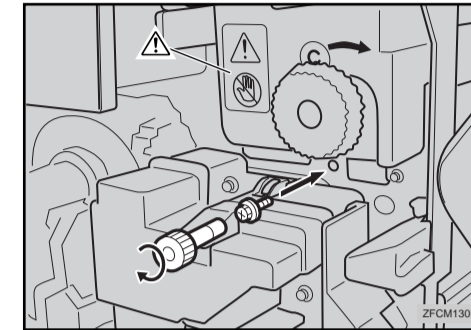
Note

- There is another transparent tape at the bottom of the fusing unit, make sure to remove the transparent tape.

- 8** Place the green handle in the fusing unit. Hold the new fusing unit with both hands, and keep the unit horizontal. Align the unit with the rail in the printer (①), and then slide the fusing unit into the printer until it stops.



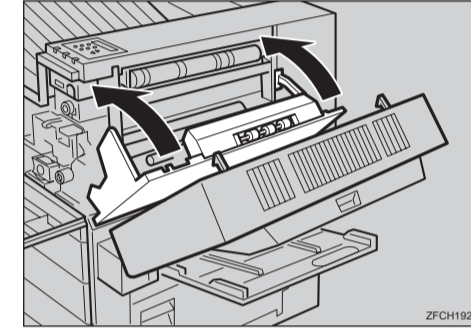
- 9** Lock the fusing unit in place with the screw you removed in step 3.



Note

- Be sure to return the screwdriver to the paper tray after using it.

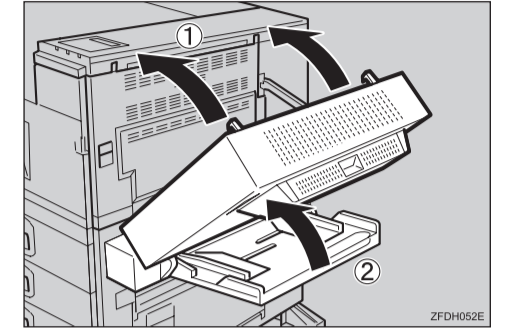
- 10** Close the right cover.



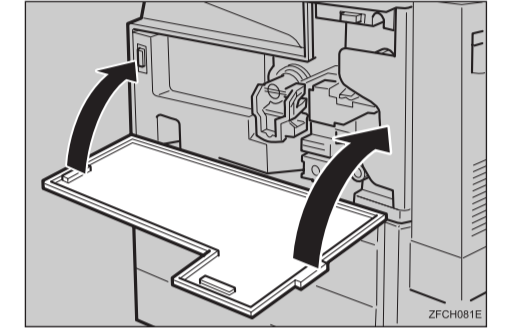
Important

- Do not force the right cover to close. If you cannot close it easily, confirm that the development unit and the fusing unit are installed correctly, and that the transfer unit is locked correctly.

- 11** Close the duplex unit (①), and then close the bypass tray (②).



- 12** Close the front cover.



- 13** Take the gloves off.

- 14** Turn the printer's power switch on.

Note

- The first time you turn the printer on after installation or after replacing the photoconductor unit, it will make several loud noises. This is due to the photoconductor unit initializing and is perfectly normal.

- 15** Confirm that the "Change Maint.Kit" message on the operation panel has cleared.

Replacing the maintenance kit is finished.